

ROLLDEPUR

DBS-500

WTF

WATER TREATMENT &
FILTERING TECHNOLOGY

OUR EXPERIENCE, YOUR RESULTS





DBS-500
WASTE WATER
TREATMENT AT BATCH
500 LITERS

DBS-500
ULTRA-COMPACT
STANDARD WASTE WATER
TREATEMENT AT BATCH

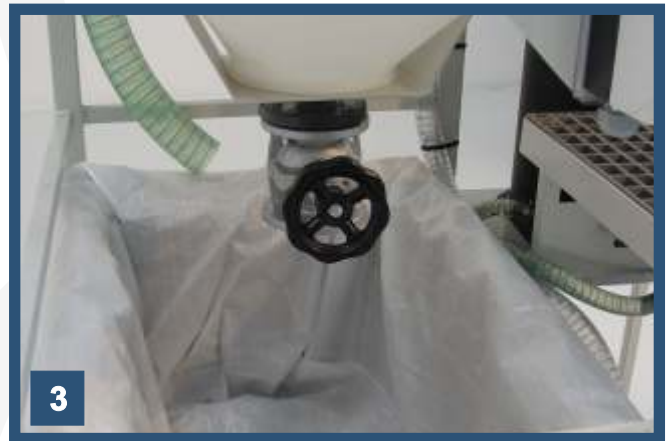
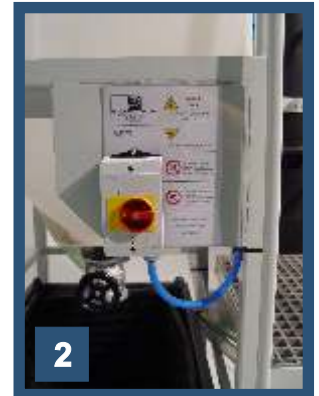
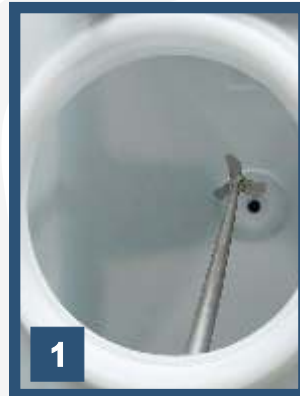


DBS-500
BATCH WASTE WATER
TREATEMENT WITH
MUD RECOVERY

DBS-500
BATCH WASTE WATER
TREATEMENT WITH ACTIVATED
CARBON FILTER



ROLLDEPUR DBS-500



DBS - denomination for the series of “standard waste water treatment plants at batch”

DBS - denomination for the series of “standard waste water treatment plants at batch” of basic type, providing mud thickening running into filter bags, with the classic container on wheels and filter bag type Maxi Bag. This type of plants represents the maximum simplicity and flexibility of operation with the minimum investment. DBS series is surely suitable for configuration with only a machine dealing with a waste water volume not extremely high.

The DBS is easy to operate: it is enough to check the pH-value, at neutral pH dose the powdered flocculant, stir for some minutes and then let the flocculation start its standard decantation.

Finally, the mud remain on the bottom and the cleaned water in the rest. As a consequence, we will act to discharge at first the water through the proper tap, then the mud by means of the suitable bottom valve.

Each model can also configured to pick up the waste water directly from a well dug out in the earth (usually to be provided by the customer) or from an external tank supplied with the plant.

Each plant can be configured with a container for the collection of the treated waste water to be recycled, complete with recycling pumps .

The available models are DBS-500 and DBS-500/FOP; this last one is also equipped with a collection tank for the cleaned water to be recycled and a pneumatic pump for the recirculation of the cleaned water.

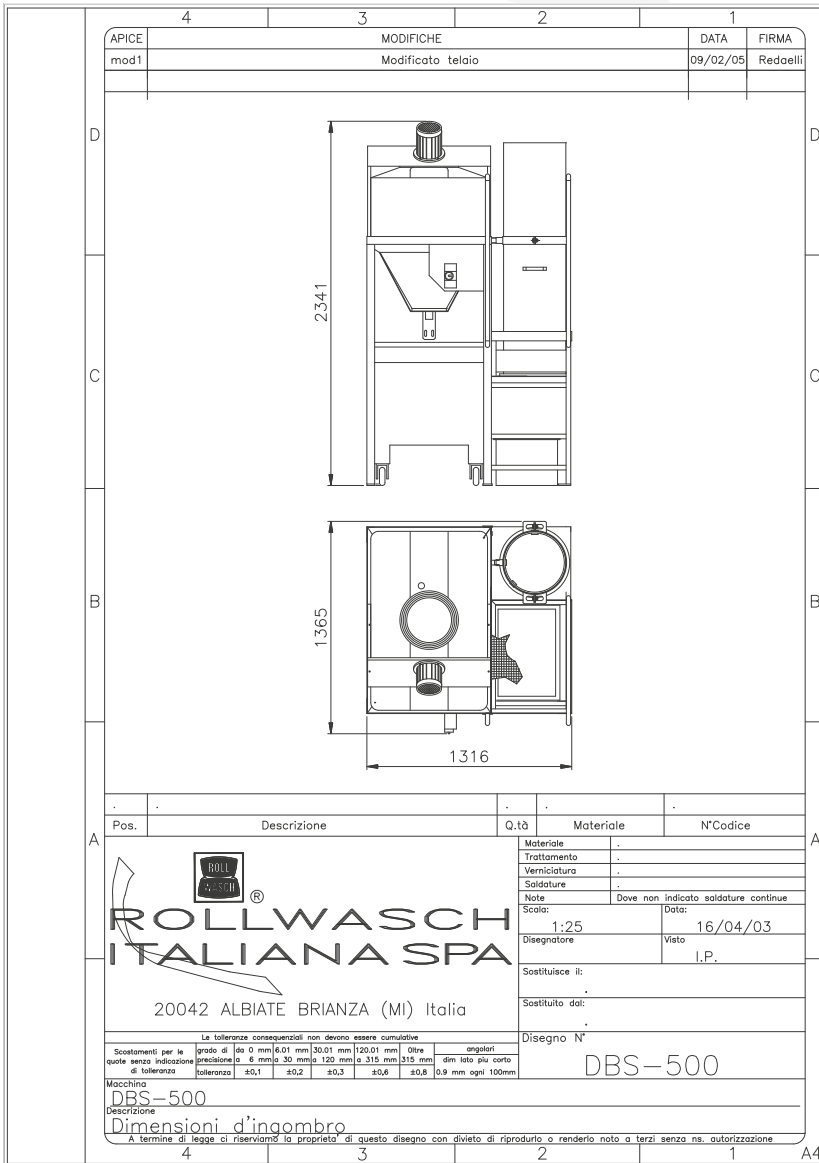
[1-2] Meccanical stirrer controlled by magneto-thermic switch. .

[3] Manual valve for the discharge of the mud collected in the thickener bottom, with new anti-obstruction and total passage valve version.

Trolley for mud collection complete with filtering bag type “SAFIL/MB-G-Plus”.

ROLLDEPUR

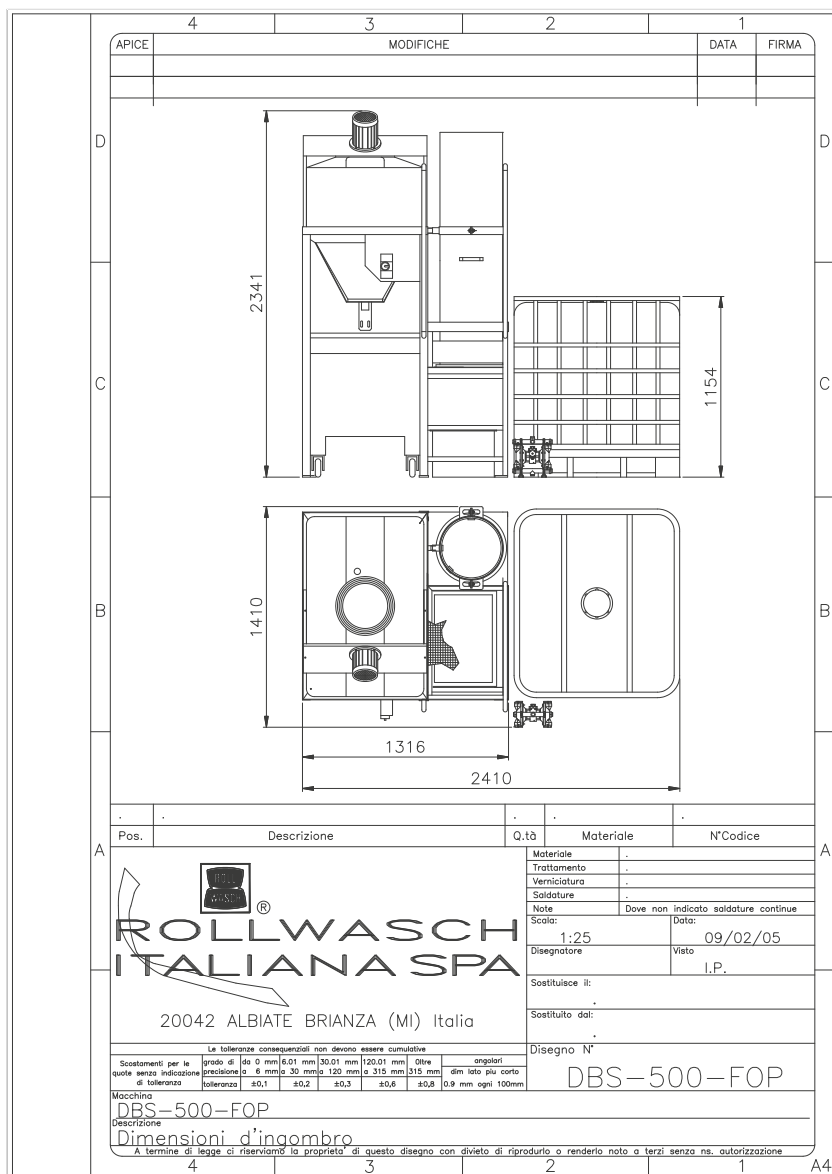
DBS-500



Superior loading side of the column with activated carbon. The column is of «Gravity» type, made of HDPE.



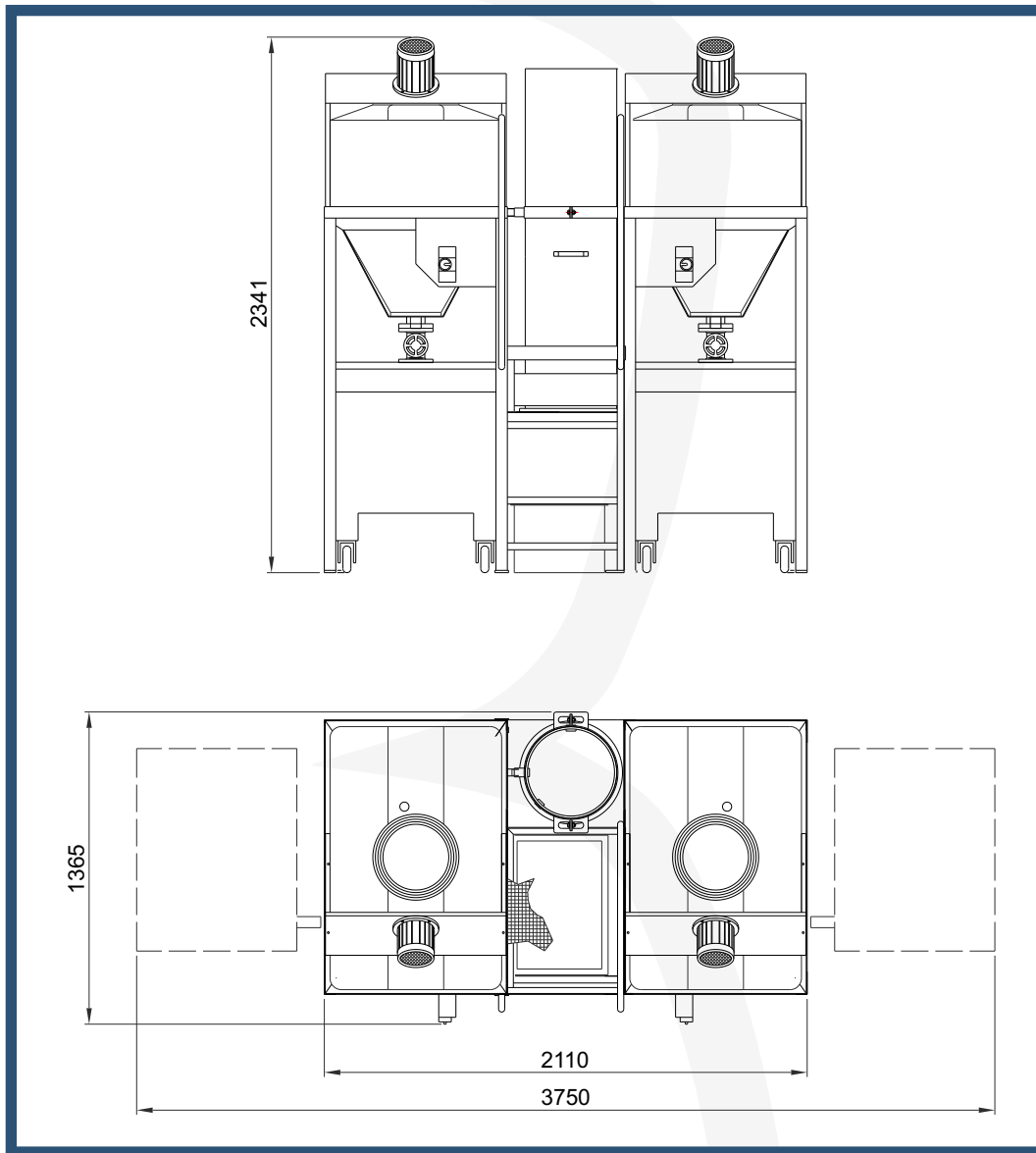
ROLLDEPUR DBS-500



On the upper part of the process tank is provided an "overflow" of security, connected with appropriate piping to the filter bag.
Also the upper side of the activated carbon column provides an overflow that comes into operation during the periodical phase of counterwashing;

ROLLDEPUR

DBS-500

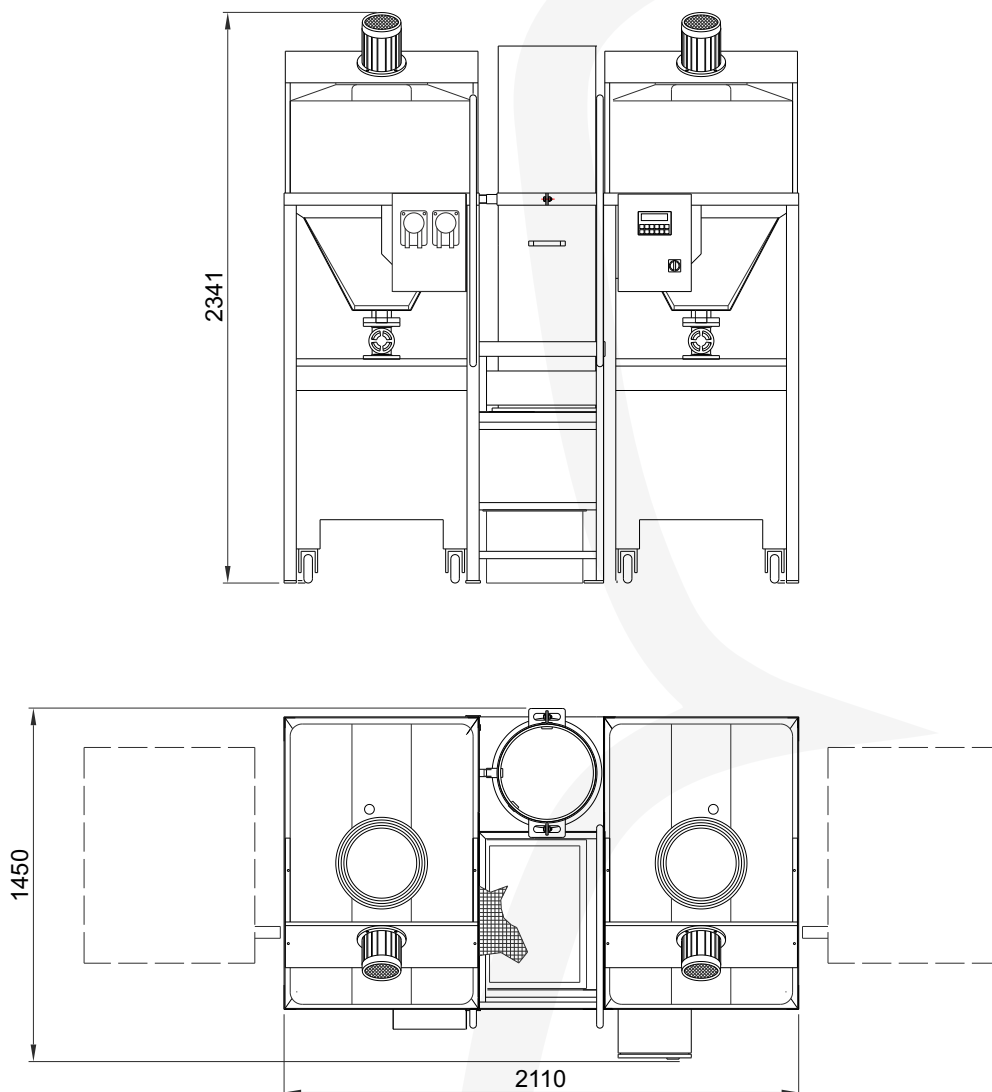


DBS-K2 - denomination for the series of “Depurator Batch Standard KOMBI 2” for batch alternated process of water treatment.

- DBS-500-K2 Double container with filtering bags for mud thickening;
- Recycling pump with valve for tank 1 or 2;
- Independent reaction tank (except for overflow that unloads in a sole recycling tank);
- Double mixer magneto-thermic switch;
- Two independent motorized mixers;
- Common active coals gravity column.



ROLLDEPUR DBS-500



DBS-K2 - is a solution designed to treat waste water alternating batches, allowing time to sewage drain in the respective filter bags.

DBS-500-K2-SH

Double container with filtering bags for mud thickening;

Two electro-pumps that work separately;

Independent reaction tank (except for overflow that unloads in a sole recycling tank);

Control board suitable to control automatically the levels and the activation of the electropumps depending on the available tank;

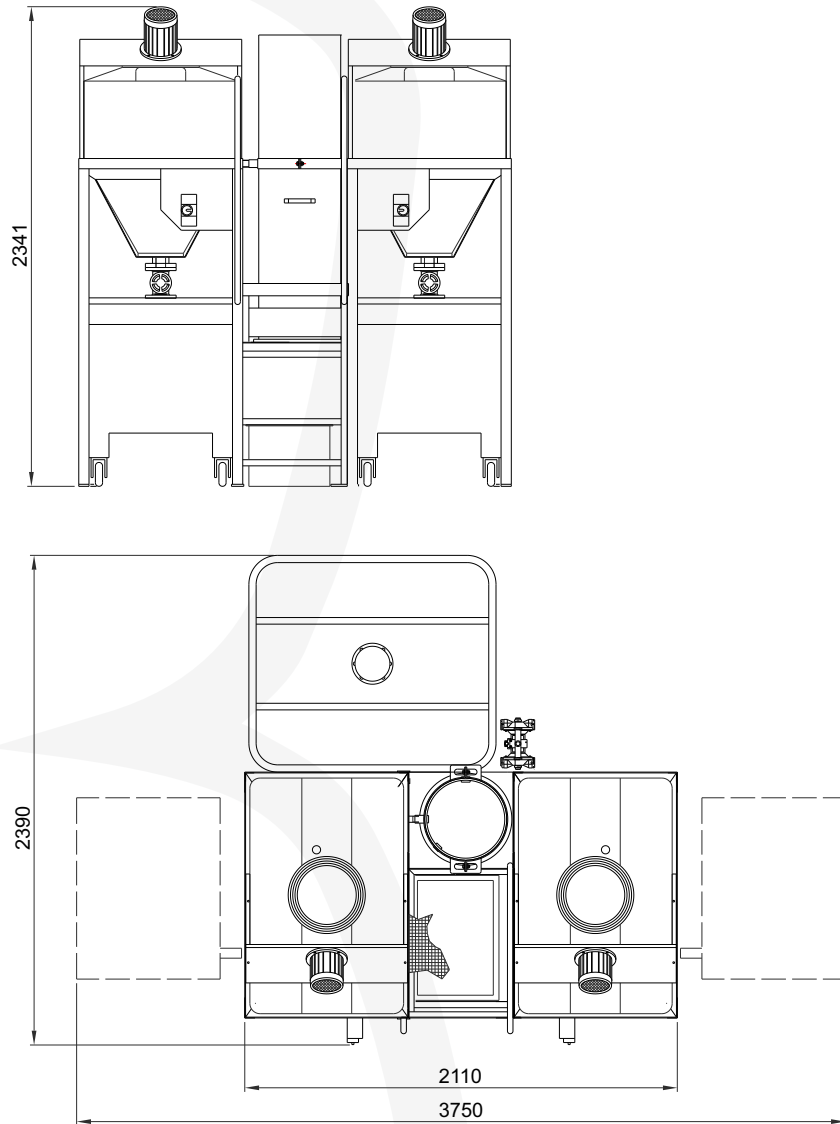
Dosing station with two ph-metric pumps for reagents;

Two independent motorized mixers;

Common active coals gravity column.

ROLLDEPUR

DBS-500



DBS-500-K2-FOP

Double container with filtering bags for mud thickening;

Recycling pump with valve for tank 1 or 2;

Independent reaction tank (except for overflow that unloads in a sole recycling tank);

Double mixer magneto-thermic switch;

Two independent motorized mixers;

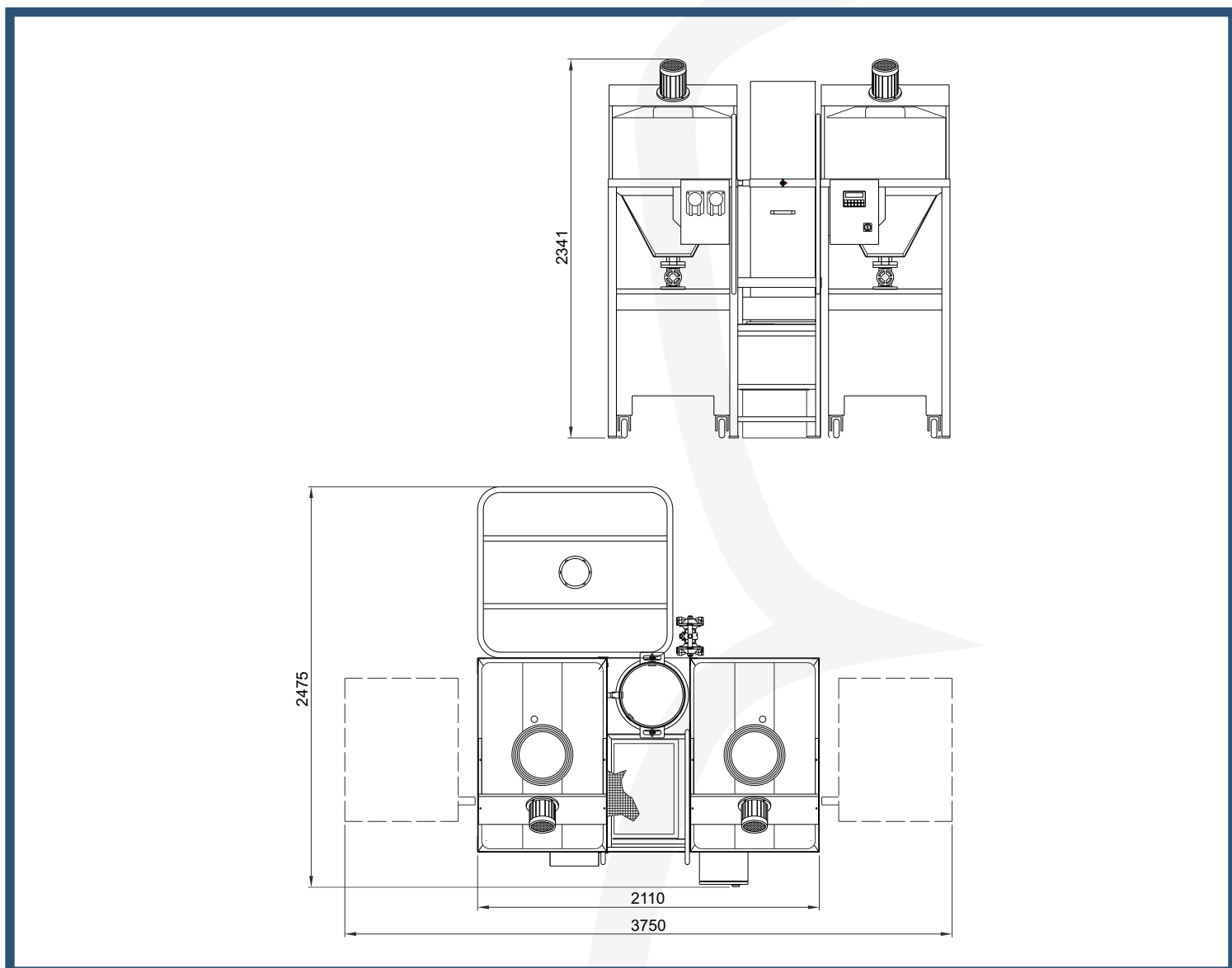
Common active coals gravity column.

1mc collection tank for clean water complete with recycling membrane pump (compressed air not provided).



ROLLDEPUR

DBS-500



DBS-500-K2-SH-FOP

Double container with filtering bags for mud thickening;

Two electro-pumps that work separately;

Independent reaction tank (except for overflow that unloads in a sole recycling tank);

Control board suitable to control automatically the levels and the activation of the electropumps depending on the available tank; Dosing station with two ph-metric pumps for reagents; Two independent motorized mixers;

Common active coals gravity column.

1mc collection tank for clean water complete with recycling membrane pump (compressed air not provided).

ROLLDEPUR DBS-500

ROLL
WASCH



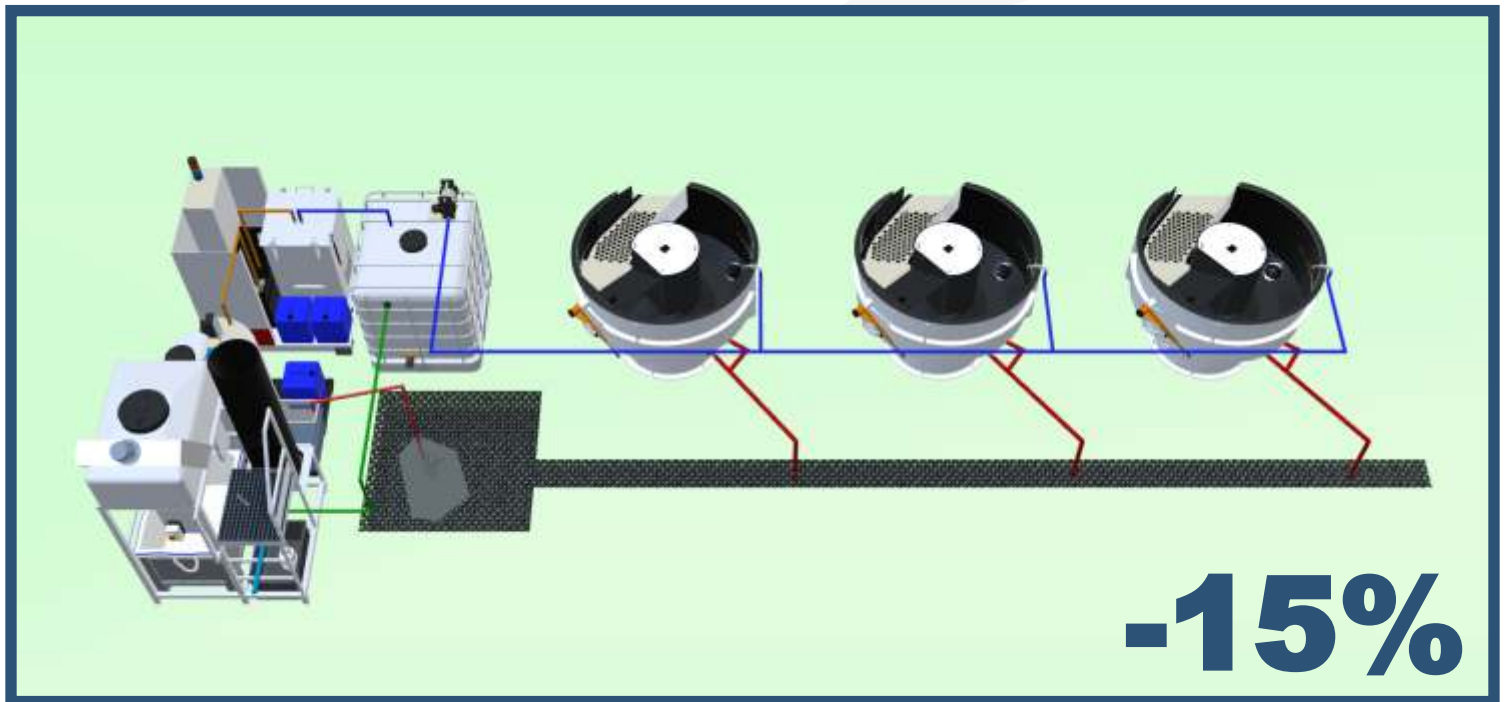
ROLLKEMIK DEPUR - decades of experience in the chemical-physical treatment of wastewater are supported by a comprehensive program of specific chemical compounds.

The family of chemical compounds and reagents for the correction of pH Rollkemik-Depur, uses decades of experience, formulations and laboratory tests, substantiated by experiences of use by a wide clientele.

For this reason we are able to address and solve various applications with success, thanks to the series of compounds flocculants and adsorbents WWTC, thanks to a series of coagulants extremely effective in the case of presence of oily traces, etc.



ROLLDEPUR DBS-500



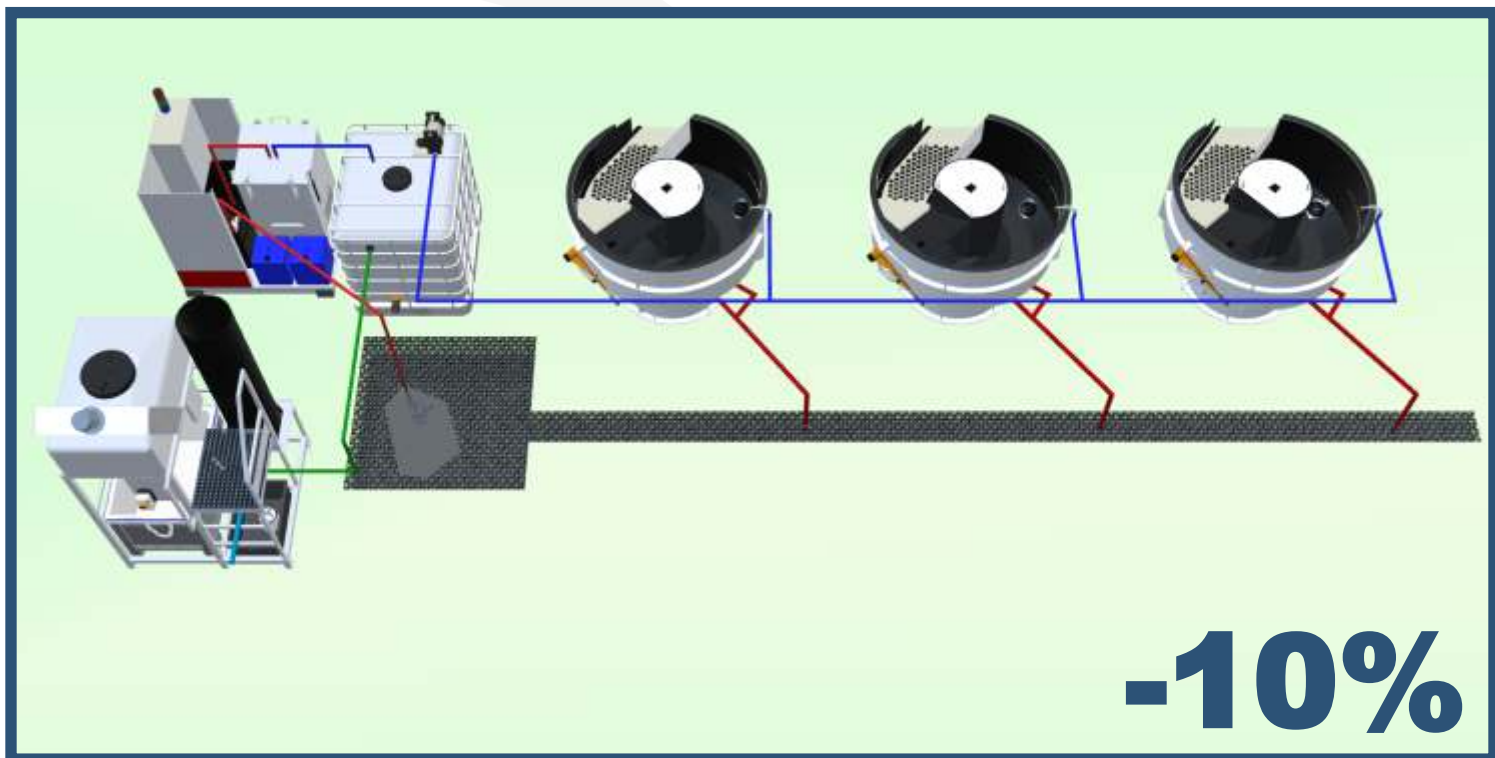
Example of integration of a DBS in system for coagulation and centrifugal filtration RFC, which releases 15% of wastewater filtered every day.

The centrifugal filtration, suitably completed with a chemical physical system **DBS** or **DBS-K2**, may recirculate daily, for example, 85% of wastewater, releasing, to overflow, a 15% per day of wastewater filtered, targeting it to the chemical physical treatment before final discharge.

If this application would be possible (in relation to the types of pollutants) and compatible with the local laws in relation to the accepted limits for the discharge, the user can renew 100% of its waste water every 6-7 days.

ROLLDEPUR

DBS-500



Example of integration of a DBS in system for centrifugal filtration RFC, which releases 10% of wastewater filtered every day.

The centrifugal filtration, suitably completed with a chemical physical system **DBS** or **DBS-K2**, may recirculate daily, for example, 90% of wastewater, releasing, to overflow, a 10% per day of wastewater filtered, targeting it to the chemical physical treatment before final discharge.

If this application would be possible (in relation to the types of pollutants) and compatible with the local laws in relation to the accepted limits for the discharge, the user can renew 100% of its waste water every 10 days.



VIA SAN CARLO, 21
20847 ALBIATE (MB) - ITALIA



TEL. +39 0362 930334
FAX. +39 0362 931440
E-MAIL INFO@ROLLWASCH.IT



WWW.ROLLWASCH.COM
PERFECT SURFACES SINCE 1950

OUR EXPERIENCE, YOUR RESULTS

