

# LINEAR

## CSR

## MSF

## MASS

# SURFACE FINISHING

OUR EXPERIENCE, YOUR RESULTS





# LINEAR CSR



Linear-CSR-4350-G

Modello Model	Lungh.x sez. vasca Lenght x sect. tank	Media Kg. Media Kg.
<b>Linear CS 3220/G</b>	2650x220 mm.	600
<b>Linear CS 3300/G</b>	2650x300 mm.	900
<b>Linear CSR 4220/G</b>	4000x220 mm.	800
<b>Linear CSR 4300/G</b>	4000x300 mm.	1300
<b>Linear CSR 4350/G</b>	4000x350 mm.	1800
<b>Linear CS 6220/G</b>	6000x220 mm.	1800
<b>Linear CS 6300/G</b>	6000x300 mm.	2200
<b>Linear CS 6350/G</b>	6000x350 mm.	2500

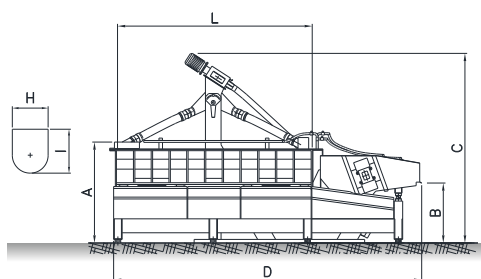
\*La carica di sfere può variare in base al rapporto peso/volume dei pezzi  
\*The charge of balls can change depending on ratio weight/volume of parts

**The range of machines Linear CS and CSR summarize the state of the art of Rollwasch® technology in the continuous-cycle processes of ball-burnishing.**

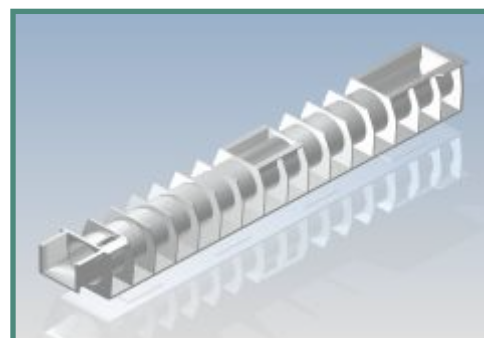
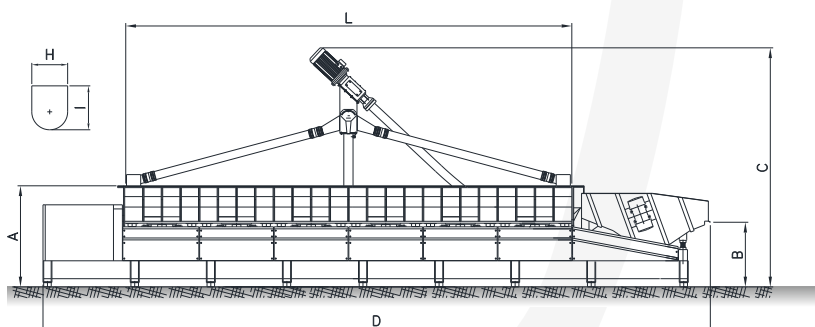
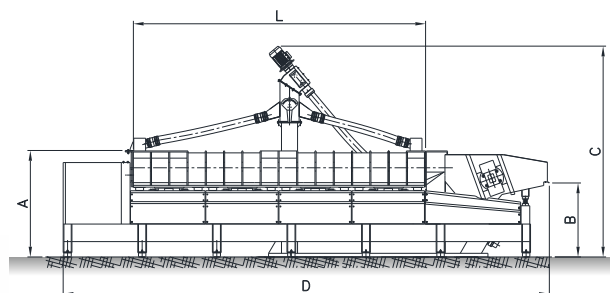
**Linear CS and CSR** is a continuous cycle, automatic linear vibrator for ball-burnishing process, working at high frequency (3000 rpm). With this type of machine we can face several processes like classic burnishing, environmental friendly pickling, deburring of micro burrs remaining after machining. **Linear CS and CSR** is a continuous feeding machine, in fact by setting automatically the process-flow by means of the **CSR-System** the machine can follow, for example, the rythm of one or more presses, changing their throughput depending on the items produced.

# LINEAR

# CSR



Sezione Utile Vasca  
Zona Corico - Ispezione



Linear-CSR-4350-G

Modello Model	Dimensioni ingombro mm. Overall dimensions mm.	Dim. nette vasca mm. Net tank sizes mm.	Potenza KW Power KW	Capacità lt. Capacity lts.
Linear CS 3220/G	A-1280 B-830 C-2350 D-4220	H-220 I-362 L-2650	13,0	105
Linear CS 3300/G	A-1280 B-830 C-2350 D-4220	H-300 I-400 L-2650	13,0	190
Linear CSR 4220/G	A-1465 B-945 C-2900 D-6650	H-220 I-220 L-4000	21,5	240
Linear CSR 4300/G	A-1465 B-945 C-2900 D-6650	H-300 I-300 L-4000	21,5	330
Linear CSR 4350/G	A-1465 B-945 C-2900 D-6650	H-350 I-350 L-4000	21,5	385
Linear CS 6220/G	A-1370 B-870 C-3200 D-8950	H-220 I-362 L-6000	34,0	360
Linear CS 6300/G	A-1370 B-870 C-3200 D-8950	H-300 I-400 L-6000	34,0	495
Linear CS 6350/G	A-1370 B-870 C-3200 D-8950	H-350 I-460 L-6000	34,0	578

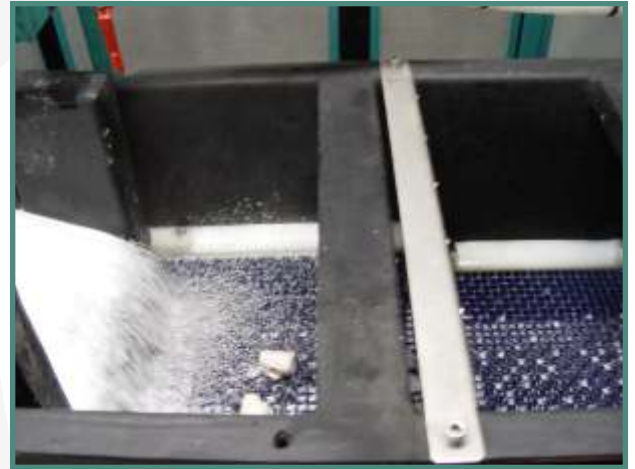
The recent design CSR applied to the model with tank of four meters, offers high performances specially in environments with acid pH.

Linear CSR has a special geometry designed to optimize the dosage of water, improve the flow of balls in the longitudinal direction and make more uniform the rotation of the vibrating mass.

This new design opens a "new way" in the field of ball-burnishing, in which Rollwasch was the world pioneer with its first high frequency machines, since the 70s.



# LINEAR CSR



**The throughfeed ball-burnishing systems Rollwasch are distinguished by their innovative and competitive solutions.**

Starting from the buffer of the load, which can be vibrating or a transport-belt, you can determine a rate of feeding capacity.

Mixing and metering dosing stations series MIX-KEM ensure a constant supply of processing liquid.

The hydraulic system ensures the constant spraying of the tank, along the entire length, in addition to rinsing the area of vibro-separation.

# LINEAR CSR



Each system solution based on Rollwasch linear machines, is designed to offer to the customer the highest level of customization and efficiency.

The adoption of special rinse tanks “UNIVAR” for total immersion rinsing, allow pieces that come from linear machines to undergo a full and plenty of rinsing (being submerged).

A special conveyor belt carries the pieces immersed in the tank, in a continuous cycle, directing them to the next drying cycle.



# LINEAR CSR



**The continuous cycle plants Rollwasch stand for the accuracy of every detail of construction.**

The attention to design details, such as depression forced ventilation in the noise-proofing cabin, interior lighting with IP55 protection, the hydraulic piston units to ensure the perfect closure of doors - avoiding people to leave partially open doors.

Where required the dryer can be raised to allow the discharge on platforms or roller defined with the customer.



**The implementation of washing systems to the CS and CSR Linear machines allows to optimize the treatment of oily or greasy parts.**

In many installations where the pieces destined to the ball-burnishing process are greasy or their surfaces have traces of oil, are being studied washing-units as first cycle.

These systems can be screw or belt, depending on the type of items to be washed. The supply of these systems ensures perfect synchronization between washing and burnishing, with continuous flow.



VIA SAN CARLO, 21  
20847 ALBIATE (MB) - ITALIA



TEL. +39 0362 930334  
FAX. +39 0362 931440  
E-MAIL [INFO@ROLLWASCH.IT](mailto:INFO@ROLLWASCH.IT)



[WWW.ROLLWASCH.COM](http://WWW.ROLLWASCH.COM)  
PERFECT SURFACES SINCE 1950

OUR EXPERIENCE, YOUR RESULTS

