

SUPERMINOR

SM3

MSF

MASS

SURFACE FINISHING

OUR EXPERIENCE, YOUR RESULTS



ROLL

WASCH



SM3
**IMPROVED SUPERMINOR
SERIES DESIGN WITH NEW
TANK AND THE ELASTIC
SYSTEM "QUATTRO"**

S M 3

**EXCELLENT SCALABILITY
WITH THE POSSIBILITY OF
CONFIGURATION OF
1 TO 3 DISCHARGE FILTERS**



S M 3

**NEW SHAPED DISCHARGING
PORT WITH OPTIONAL
WS© WEAR SENSOR**

SM3

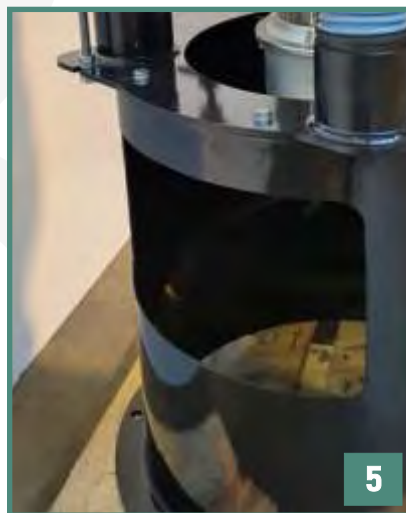
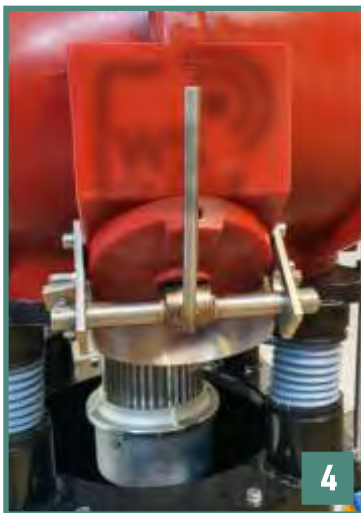
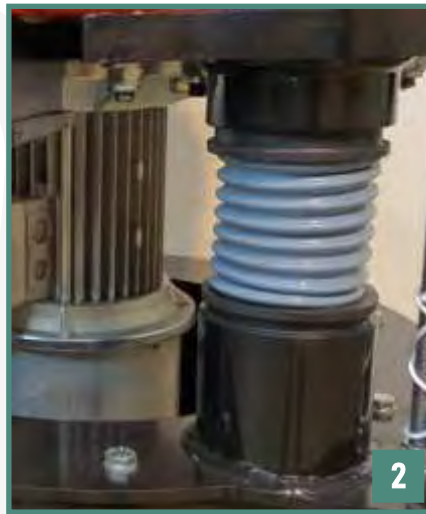
**PROFESSIONAL WASTEWATER
DRAIN VALVE WITH 100%
RETENTION OF WASTEWATER
AND ABRASIVES
(OPTIONAL PNEUMATIC VERSION)**



SM3 SUPERMINOR



The new Superminor SM3 version represents the best you can expect from the vibratory finish solution in the medium size range. The carat weight of a hundred liters of capacity seems limiting, but in fact offers great performance in terms of load, with capacities up to 500 kg without compromising the grinding results or performance. A real milestone in the sector.



Characteristics of a machine SM3-D-120 in the wet basic version, with 1 filter/drain valve:

[1] The new generation CE identification plates show the registration data of each individual machine - all data can be transferred to the mobile phone or tablet by framing the QR code with a simple click. The same data can then be shared with the Rollwasch Service Center, to offer all necessary support for the identification of spare parts.

[2] Springs are protected by elastic and flexible guards to ensure operator safety.

[3] Two tie rods are applied for the transport of the machine for the correct fixing of the tank.

[4] The discharging port is the same as in its previous version, made of PU and stainless steel, but flared and prepared for the possible insertion of the (optional) wear sensor of the WS© series.

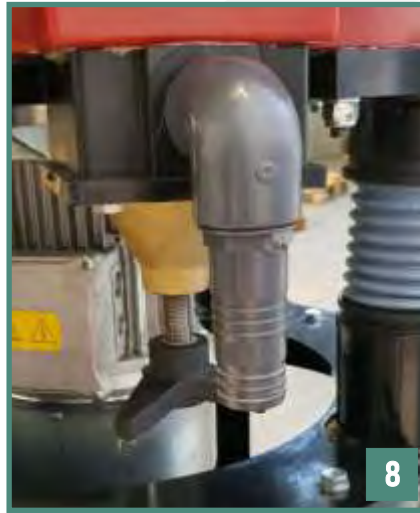
[5] Wide inspection aperture to access vibrator motion adjustment (lower eccentrics).

[6] Practical PU screw cap normally applied in 2 points (one dedicated to the standard shower on wet versions). Depending on the version, these arrangements may have the cap or any other optional connectors.



SM3

SUPERMINOR



Characteristics of a machine SM3-D-120 in basic version with 1 filter/drain valve:

[7] Predisposition for other discharge filters/valves - up to a total of 3, of which 1 is standard and can be combined with a GM or PRO valve (with handwheel), while the others are optional - depending on the version.

[8] Standard valve in PRO version, mounted on the machine, available on request also pneumatic.

[9] The machine can be supplied with a cover (optional), called PLASTO-LID-123, which allows a discreet acoustic insulation and performs the function of splash guard or anti-dust cover, depending on the type of process operated with the machine (wet or dry). This version is new generation, slightly larger, with increased ribbing, but of low weight.

[10] Recess to improve the attachment stability of the PLASTO-LID-123 to the tank.

[11] Cover fixing system, with eyebolt (only during transport/lifting) to facilitate the movement of the machine when necessary.



1



2



3

Some examples of plants with the machines of Superminor SMR series.

An example of a plant solution type RW-1776 for vibratory finishing of articles of various types and metal alloys, split into two lines, respectively:

a. for articles compatible with the drying vibrator with warm absorbent granulates (1. above left); b. for articles compatible with the centrifugal drying, with hot air (1. low right);

The plant is composed by a vibro-conveyor (2.) to transport the treated pieces, with continuous recirculation of passivating solution.

However, the possible personalizations are countless.

An example (3.) of self barrelling process, with special antishock technology Microfluid (Patent pending - I).



Caratteristiche standard delle macchine
Standard features of the machines

Soluzioni disponibili per il comando elettrico
Available solutions for electric control

Macchine Standard Tipo	Versione	Qualità PU	N.° filtri e tipo di valvole	Codice Comando Interruttore magnetotermico "E"	Codice Quadro Comandi "MP" (PLC+Inverter) oppure "MPE" (idem + Espansione)	Codice Quadro Comandi "TCS-E" (Touch+PLC+Inverter) completo di espansione
Standard Machines Type	Version	PU quality	Nr. of filters and type of valve	Magnetothermic Switch "E" code	Control Board Micro Processor «MP» (PLC+inverter) or «MPE» (same + Expansion)	Control Board Touch Screen «TCS-E» (Touch+PLC+Inverter) complete with expansion
SM3-D-120/P-CF	PRO	Thermo Plus Royal	1 PRO	E2	MP2 o/or MP2E	TCS-2-E
SM3-D-120-GM/P-CF	GM	Thermo Plus Royal	1 GM	E2	MP2 o/or MP2E	TCS-2-E
SM3-D-120-GML/P-CF	GML	Thermo Plus Royal	1 GM	E2/L	MP1 o/or MP1E	TCS-1-E
SM3-D-120-GMLD/P-CF	GMLD	Thermo Plus Royal	1 GM	E2/L	MP1 o/or MP1E	TCS-1-E
SM3-D2-120/P-CF	PRO	Thermo Plus Royal	2 PRO	E2	MP2 o/or MP2E	TCS-2-E
SM3-D2-120-GM/P-CF	GM	Thermo Plus Royal	2 GM	E2	MP2 o/or MP2E	TCS-2-E
SM3-D2-120-GML/P-CF	GML	Thermo Plus Royal	2 GM	E2/L	MP1 o/or MP1E	TCS-1-E
SM3-D2-120-GMLD/P-CF	GMLD	Thermo Plus Royal	2 GM	E2/L	MP1 o/or MP1E	TCS-1-E
SM3-D3-120/P-CF	PRO	Thermo Plus Royal	3 PRO	E2	MP2 o/or MP2E	TCS-2-E
SM3-D3-120-GM/P-CF	GM	Thermo Plus Royal	3 GM	E2	MP2 o/or MP2E	TCS-2-E
SM3-D3-120-GML/P-CF	GML	Thermo Plus Royal	3 GM	E2/L	MP1 o/or MP1E	TCS-1-E
SM3-D3-120-GMLD/P-CF	GMLD	Thermo Plus Royal	3 GM	E2/L	MP1 o/or MP1E	TCS-1-E

Principali accessori specifici per Superminor
Main specific accessories for Superminor

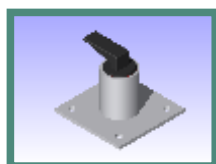
Altri accessori opzionali comuni
Other common optional accessories

Macchina Standard Tipo Superminor SMR	Codice Copertura opzionale in PU	Valvola completa in PU opzionale - Codice "VP"	Codice vaglio opzionale	Valvola	Codice di stazione dosaggio automatico acqua/composto (esempio)	Codice Vasca di riciclo acqua/composto
Machine Standard Type Superminor SMR	PU optional cover code	PU complete valve Optional - Code "VP"	Optional Sieving unit Code	Valve	Automatic Dosing station water/compound Code (example)	Recycling tank water/compound Code
SM3-D-120/P-CF	PLASTO-LID-123	standard	UNID-MICRO-TC	PRO	MIX-KEM	VDR
SM3-D-120-GM/P-CF	PLASTO-LID-123	su richiesta/on demand (VP)	UNID-MICRO-TC	GM	MIX-KEM	VDR
SM3-D-120-GML/P-CF	PLASTO-LID-123	su richiesta/on demand (VP)	UNID-MICRO-TC	GM	MIX-KEM	VDR
SM3-D-120-GMLD/P-CF	PLASTO-LID-123	su richiesta/on demand (VP)	UNID-MICRO-TC	GM	MIX-KEM	VDR

Stessi accessori disponibili anche per versioni D2 e D3 - con estensione D, D2 o D3-WS la macchina è dotata di sensore di usura opzionale WS® (Wear Sensor)
Same accessories available also for versions D2 and D3 - with extension D, D2 or D3-WS the machine is equipped with the optional wear sensor WS®

In alternativa al PLASTO-LID-123 standard in poliuretano, è disponibile il PLASTO-LID-123/L (alleggerito e trasparente) o PLASTO-LID-123/XL (super leggero/solo a secco)
As alternative to PLASTO-LID-123 standard in polyurethane, it is available PLASTO-LID-123/L (transparent and light) or PLASTO-LID-123/XL (extra light/only dry)

SMR-D-25; SMR-D-50; SMR-D-120: exhaust valve



Exhaust valve GM version



Exhaust valve PRO version



The WS © (Wear Sensor) applied to the discharging port, is able to offer a predictive information on the level of wear regarding the tank lining - applied experimentally since 2019, the sensor WS© allows you to program the tank replacement or the reconstruction of the lining in advance of the "through" wear.

This solution is protected by a patent (© <https://technosurface.it>).

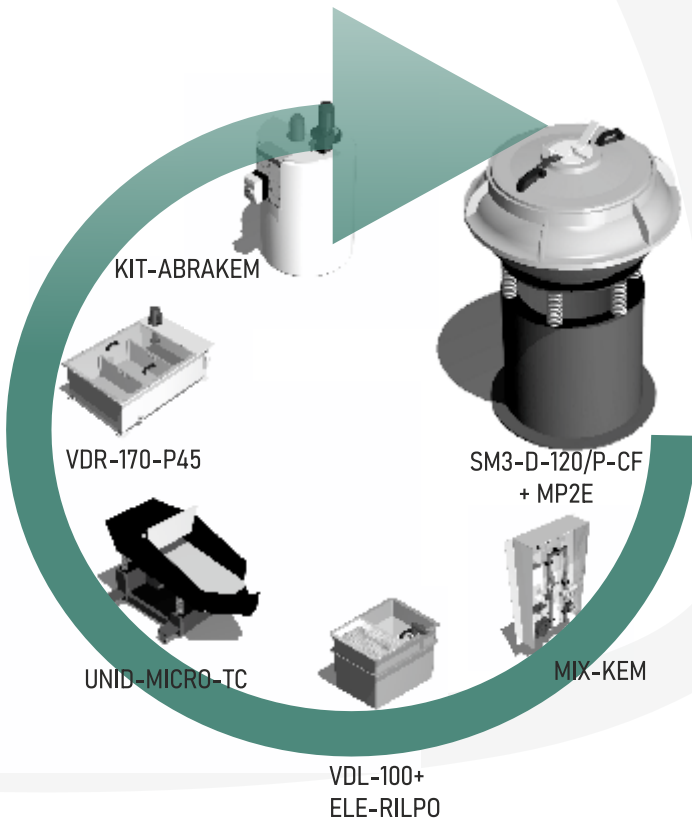


The control panel on the frontal side is equipped with function keys and a wide display for the best flexibility and working completeness.

The Superminor SM3 machines are manufactured in "P/CF" version (with wire – without any electric control) and can be combined with four types of standard solutions, respectively:

- "E" – magnetothermic switch with start and stop functions, with thermic protection of the motorvibrator;
- "MP" – Control board equipped with microprocessor, inverter, control panel with wide display and function keys, main and emergency (red/yellow) switch, IP55 class protection with high insulation degree thanks to the manufacturing material, specific and customized software for every single supply. Input/output presetting suitable for only one accessory of defined type.
- "MPE" – Control board like the "MP" type, but with input/output expansion in order to run max. two/three accessories of defined type.

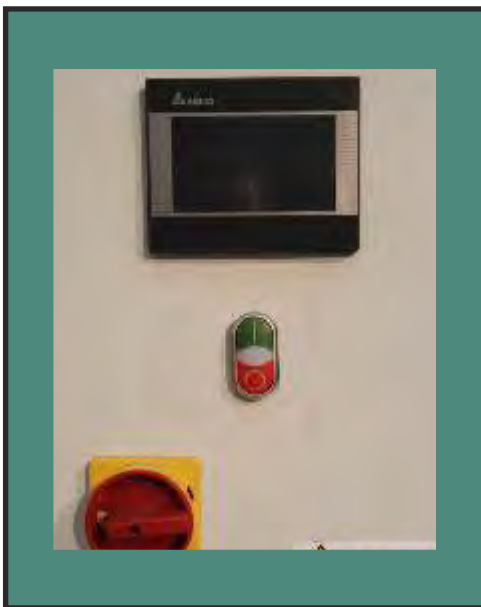
The supply of the digital control board foresees also the language customization of the support information both of the controls and of the messages, such as the motor rotation speed. The standard software 2.0 release allows by means of a function-key to switch from a low speed to a high speed and vice versa, the speeds are pre-set. The machine working hours (hours counter function), etc. For further details about the possible "Machine/Accessories" combinations that can be run by the MP/MPE control boards, check with our technical/commercial department or ask for a quotation!



MACHINE ID/...TCS... CT
 It has all the same features already present in the TCS series control panels, with the following additions: a. Module "C" controls the speed of the inverter with a simple analog potentiometer carried out outside the panel; b. "T" module - facilitates the operator in the timing change inputs (key + and key -); c. "CT" module - both options mentioned above



Frontal view of the control board of the MP/MPE series, 230V - 50Hz or 400V - 50 Hz depending from the type of machine.



Frontal view of the control board of the TCS series, 230V - 50Hz or 400V - 50 Hz depending from the type of machine.

The control boards of the Superminor SMR machines are the result of a project that has the purpose to simplify and unify the most different use possibilities into a single solution. From a statistical macro-analysis of the most frequent combinations between machine and accessories, we have designed the new MP (or MPE in the expanded version) control board that is equipped with a microprocessor and a control digital panel always combined with a frequency converter.

A control board equipped with microprocessor (or PLC) offers the advantage to be programmed, within fairly wide limits, according to the process requirements and to the used optional accessories by simply loading the most suitable software. The same control panel, equipped with frequency converter (or INVERTER), extends the use possibilities of a vibrating machine, since it allows a more flexible management, so that to adjust to any unforeseen variables with a simple "clic".

The TCS control board has all the same features already present in MP and MPE series control panels, with the following differences and additions: HMI - Man Machine Interface - Through Color Touch Screen Panel Inside the picture is available: A set of cables to connect to the TOUCH panel, microprocessor and inverter in software modification or operating system upgrade mode.

These features make it possible, through any PC (not supplied) to the user, to:

to. Upload Open Source operating system updates - available free of charge on the Internet; b. Load variations that may be agreed upon with Rollwasch (supply of software with variations could involve participation in costs) for work program.

To increase the safety and the isolation class of the control board, usually the cases are made of plastic material, excellent insulation. The IP55 isolation class is moreover a very good standard for the vibrating machines type of use.



!“E” – magnetothermic switch with start and stop functions, with thermic protection of the motorvibrator;

SM3 SUPERMINOR

ROLL
WASCH



2



5



6

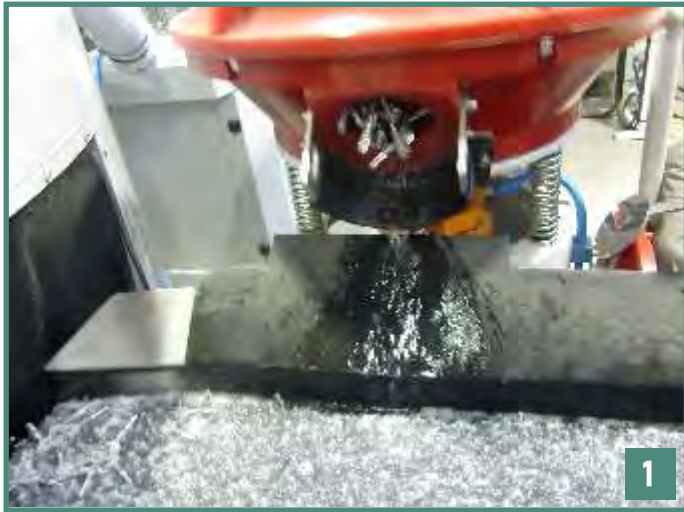
Few examples: 1. example of recycling-tank VDR-80-P45/PE with capacity of 80 lts.;
 2. an example of a modular accessory for dividing the basin into several sectors, called "carousel" - by means of the media, the "carousel" moves clockwise inside the process tank;
 3. Combined dosing station, MIX-KEM-80-GM together with KIT-ABRAKEM;
 4. Automatic station for dosing and mixing water and liquid compound, MIX-KEM-80-GM;
 5. Recycling tank with electro-pump and capacity of 170 lts.;
 6. example of VDS-160-MIX tank for the filtration of the suspended solids contained in the effluents discharged from the machine (suitable for processes type MICROFLUID - Patent Pending - I);



SM3 SUPERMINOR



The fields of use of Superminor machines are numerous, as in the ABRKEM processes on components for weapons, such as break-action rifle cases.



Modultek: modular accessories; Rollnoise: sound proofing solutions

Few examples:

1. vibro-transporter type «VIBRO-CONVEYOR-SLIM»;
2. DOS-KEM-QF column, a technologic support frame designed to hold the control panel of the machine and equipped with a metering station for automatic processes such QF (Abragrip phase and final automatic rinsing phase with water / compound mixture);
3. Automatic dosing station for mixing water and liquid chemical compound type DOS-KEM-150;
4. Superminor SMR-ES-50-D, in special design with raised basement;
5. Stainless steel tank for submerged rinsing of workpieces, complete of transport band, series UNIVAR-PVC.



SM3

SUPERMINOR

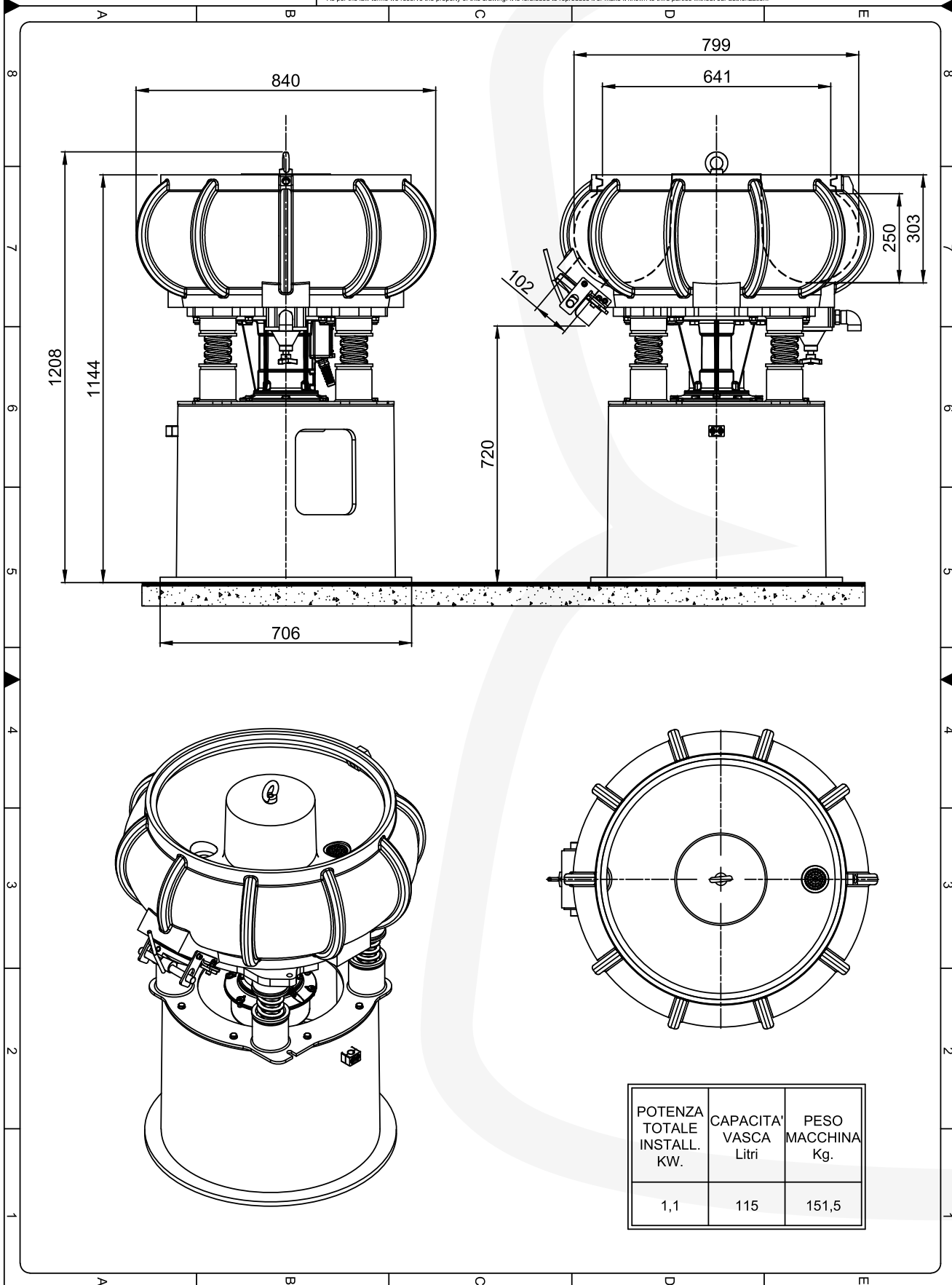


ROLLWASCH® ITALIANA S.p.A.
 VIA SAN CARLO N°21
 20847 ALBIATE (MB) - ITALY
 TEL. +39-0362 930 334 - FAX. +39-0362 931 440
 e-mail: info@rollwasch.it - internet: http://www.rollwasch.it

Oggetto - Cliente/Committente
 Object - Client/Tender **Dimensioni d'ingombro/Overall dimensions**
 Disegno N°
 Drawing N° **SM3-D-120/P-CF**
 Dalla revisione:
 Revision date: .
 Designatore
 designed by Annoni

Scala
 scale .
 Data
 Date **18/04/2024**
 Visto
 Approval .

A termini di legge ci riserviamo la proprietà di questo disegno con divieto di riprodurlo o renderlo noto a terzi senza nostra autorizzazione.
 As per the law terms we reserve the property of this drawing. It is forbidden to reproduce it or make it known to third parties without our authorization.



POTENZA TOTALE INSTALL. KW.	CAPACITA' VASCA Litri	PESO MACCHINA Kg.
1,1	115	151,5

SM3-D-120-P/CF

SM3

SUPERMINOR

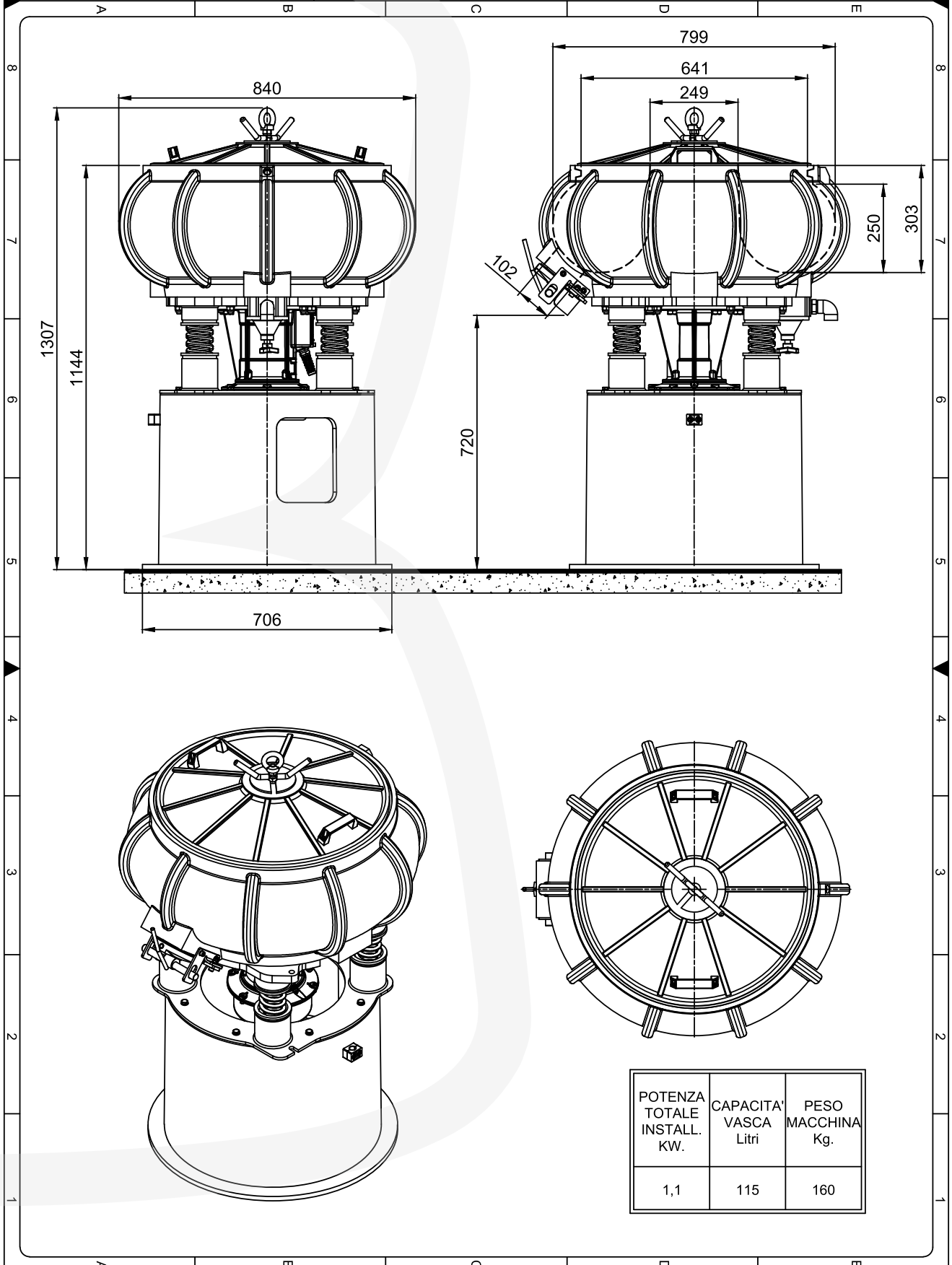


ROLLWASCH® ITALIANA S.p.A.
 VIA SAN CARLO N°21
 20847 ALBIATE (MB) - ITALY
 TEL. +39-0362 930 334 - FAX. +39-0362 931 440
 e-mail: info@rollwasch.it - internet: http://www.rollwasch.it

Oggetto - Cliente/Committente
 Object - Client/Tender **Dimensioni d'ingombro/Overall dimensions**
 Disegno N°
 Drawing N° **SM3-D-120/P-CF + PLASTO-LID-123**

Scale
 scale
 Date
 Date **18/04/2024**
 Data revisione:
 Revision date:
 Disegnatore
 designed by **Annoni**
 Visto
 Approval:

A termine di legge ci riserviamo la proprietà di questo disegno con divieto di riprodurlo o renderlo noto a terzi senza nostra autorizzazione. As per the law terms we reserve the property of this drawing. It is forbidden to reproduce it or make it known to third parties without our authorization.



POTENZA TOTALE INSTALL. KW.	CAPACITA' VASCA Litri	PESO MACCHINA Kg.
1,1	115	160

SM3-D-120-P/CF - PLASTO-LID-123



SM3

SUPERMINOR



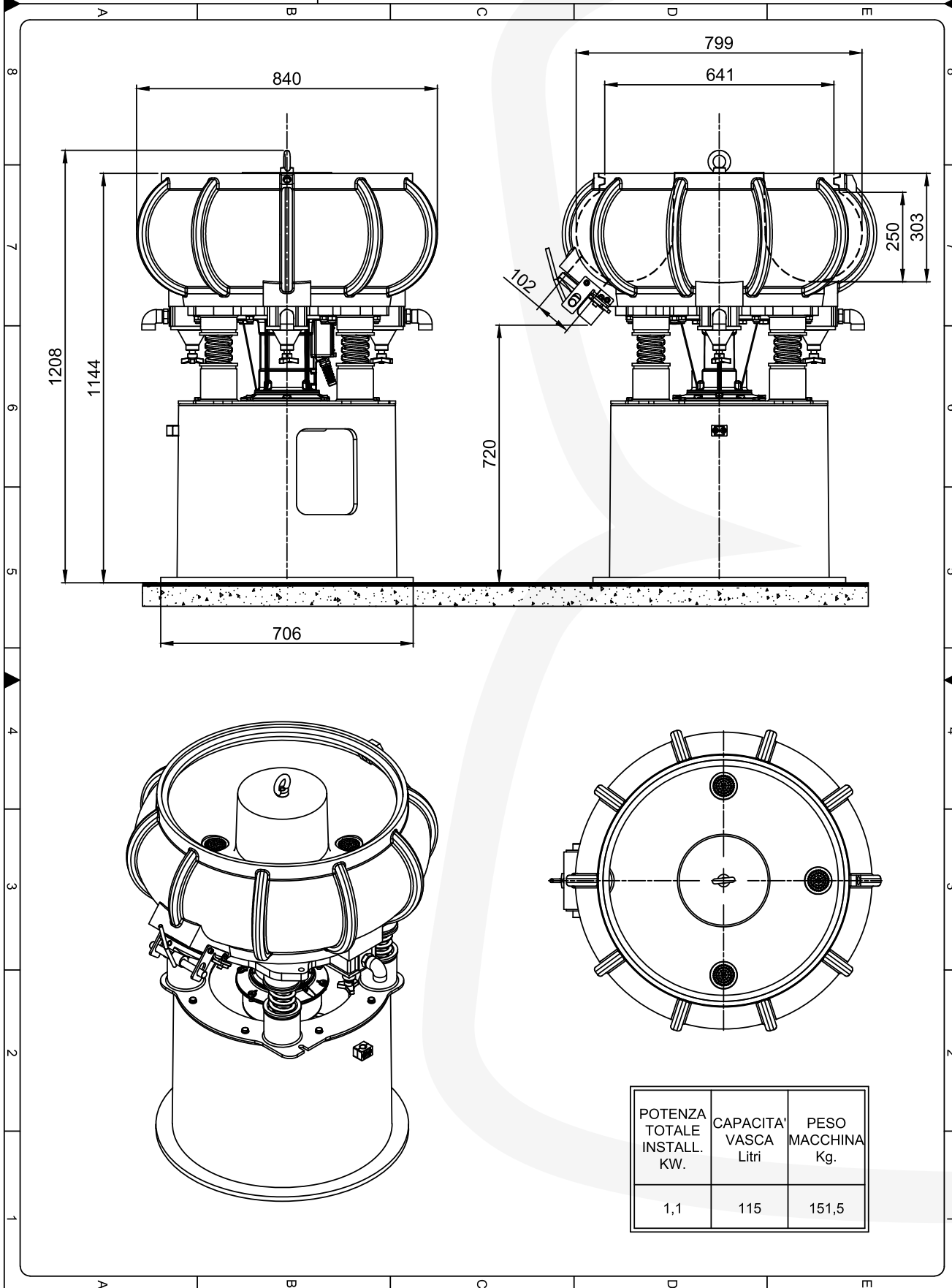
ROLLWASCH® ITALIANA S.p.A.
 VIA SAN CARLO N°21
 20847 ALBIATE (MB) - ITALY
 TEL. +39-0362 930 334 - FAX. +39-0362 931 440
 e-mail info@rollwasch.it - internet: http://www.rollwasch.it

Oggetto - Cliente/Committente
 Object - Client/Tender **Dimensioni d'ingombro/Overall dimensions**
 Disegno N°
 Drawing N° **SM3-D3-120/P-CF**

Scala
 scale
 Data revisione:
 Revision date:
 Disegnatore
 designed by Annoni

Data
 Date **18/04/2024**
 Visto
 Approval

A termine di legge ci riserviamo la proprietà di questo disegno con divieto di riprodurlo o renderlo noto a terzi senza nostra autorizzazione.
 As per the law terms we reserve the property of this drawing. It is forbidden to reproduce it or make it known to third parties without our authorization.



POTENZA TOTALE INSTALL. KW.	CAPACITA' VASCA Litri	PESO MACCHINA Kg.
1,1	115	151,5

SM3-D3-120-P/CF

SM3

SUPERMINOR

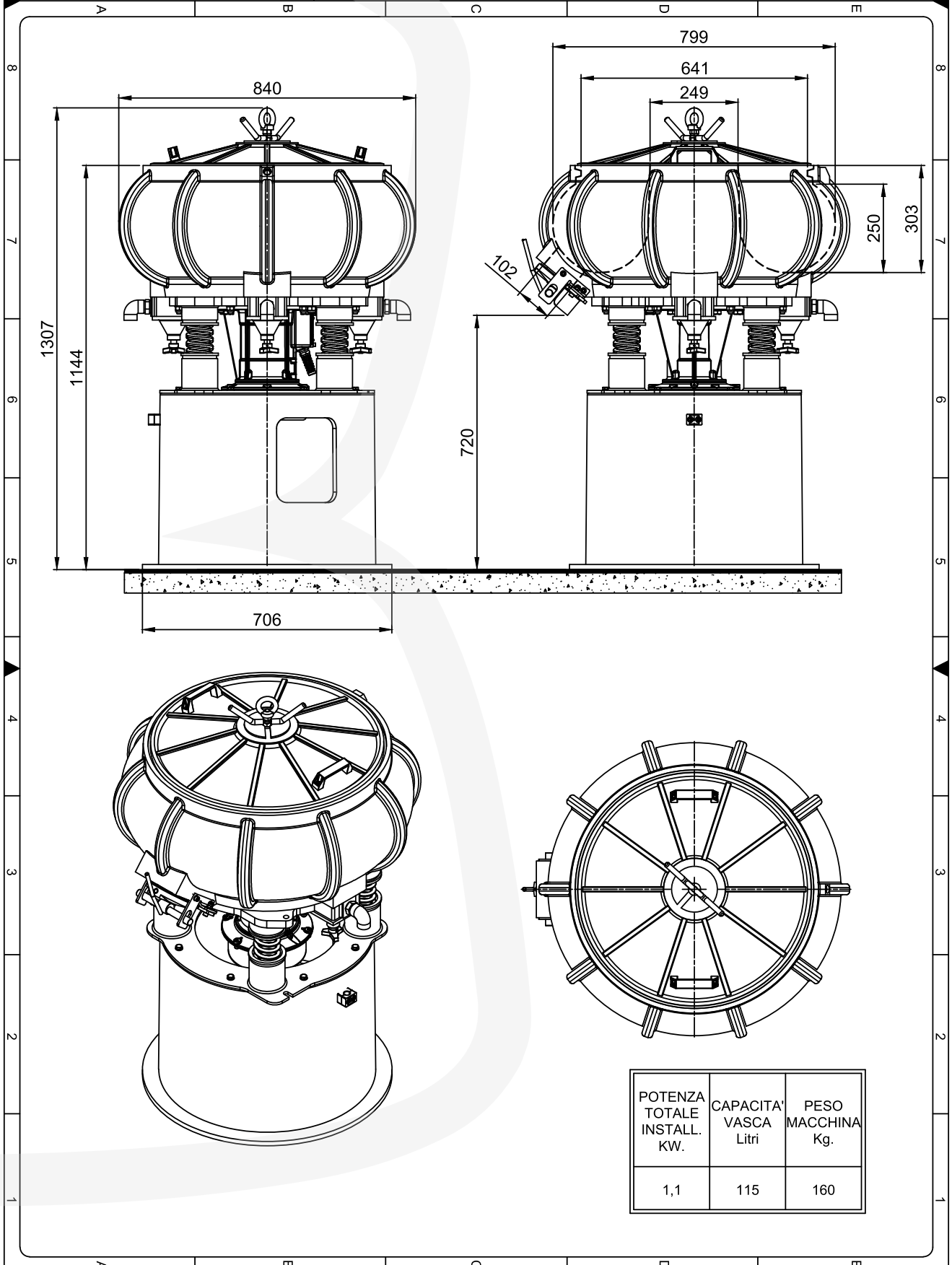


ROLLWASCH® ITALIANA S.p.A.
 VIA SAN CARLO N°21
 20847 ALBIATE (MB) - ITALY
 TEL. +39-0362 930 334 - FAX. +39-0362 931 440
 e-mail: info@rollwasch.it - internet: http://www.rollwasch.it

Oggetto - Cliente/Committente
 Object - Client/Tender **Dimensioni d'ingombro/Overall dimensions**
 Disegno N°
 Drawing N° **SM3-D3-120/P-CF + PLASTO-LID-123**

Scala
 scale
 Data revisione:
 Revision date: .
 Disegnatore
 designed by Annoni
 Visto
 Approval.
 Data Date **18/04/2024**

A termini di legge ci riserviamo la proprietà di questo disegno con divieto di riprodurlo o renderlo noto a terzi senza nostra autorizzazione. As per the law terms we reserve the property of this drawing. It is forbidden to reproduce it or make it known to third parties without our authorization.



POTENZA TOTALE INSTALL. KW.	CAPACITA' VASCA Litri	PESO MACCHINA Kg.
1,1	115	160

SM3-D3-120-P/CF - PLASTO-LID-123



VIA SAN CARLO, 21
20847 ALBIATE (MB) - ITALIA



TEL. +39 0362 930334
FAX. +39 0362 931440
E-MAIL INFO@ROLLWASCH.IT



WWW.ROLLWASCH.COM
PERFECT SURFACES SINCE 1950

OUR EXPERIENCE, YOUR RESULTS

